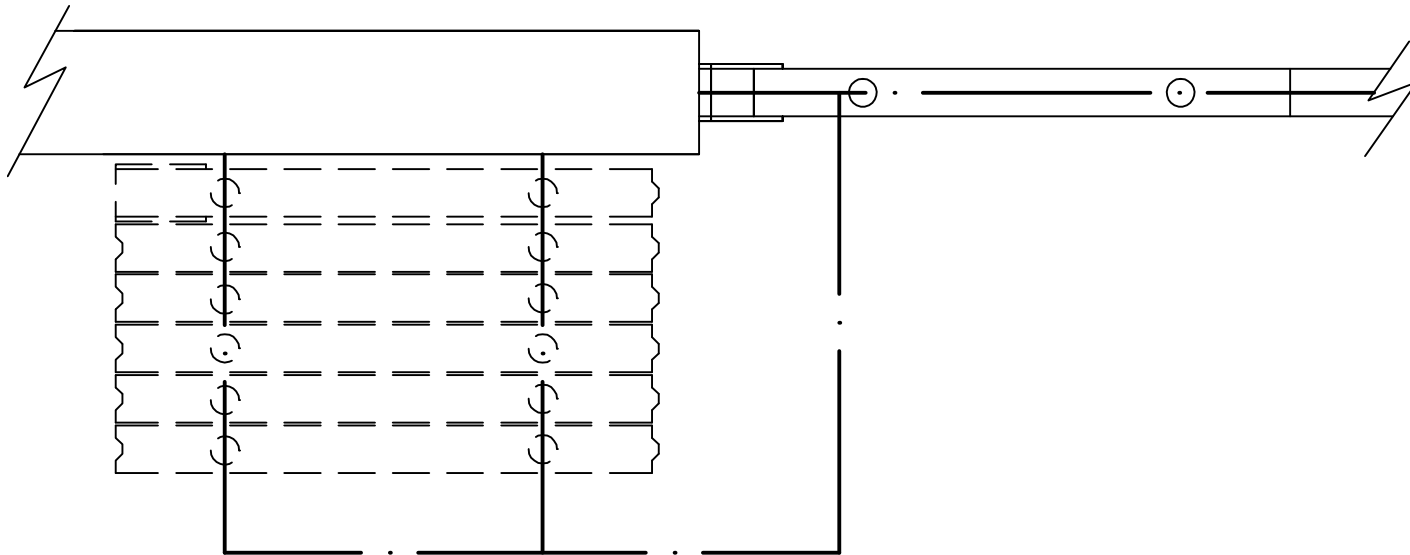


• Panels may be parked practically anywhere providing there is sufficient space and support above the head track.

• Roller centres and position of track junctions will vary according to panel width, panel thickness, and the total number of panels. Contact our technical department for exact dimensions.



• Denotes centre line of track

TYPE 85



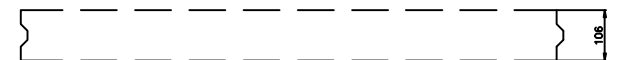
TYPE 100 & TYPE S 100K



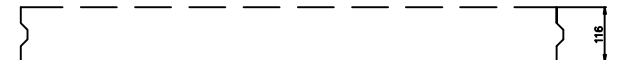
TYPE S 100U



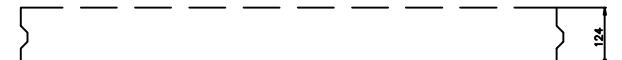
TYPE S 100K
(with 19mm panelfaces)



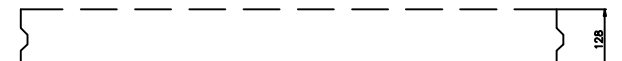
TYPE 110



TYPE S 130K



TYPE S 130U



Calculate approximate panel widths as follows:
 (Gross opening width) - 200mm =
 Then divide this net width by the no. of panels required.
 The maximum panel width is 1240mm.