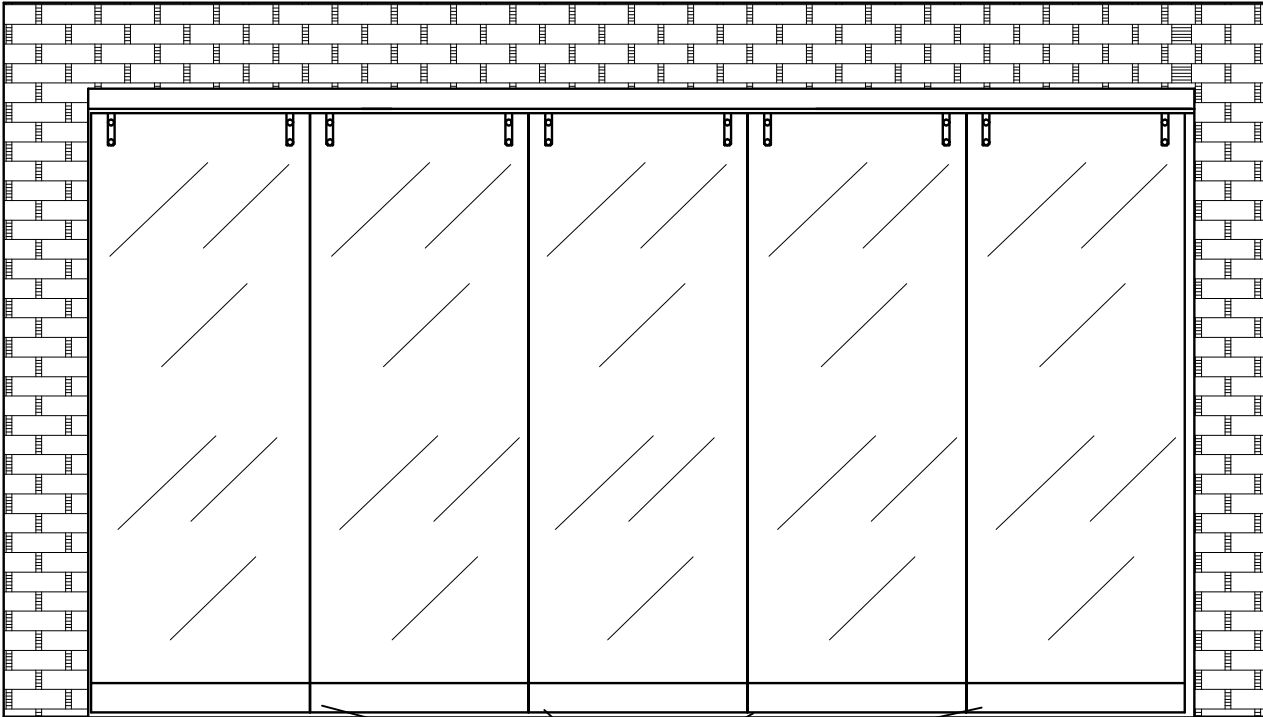
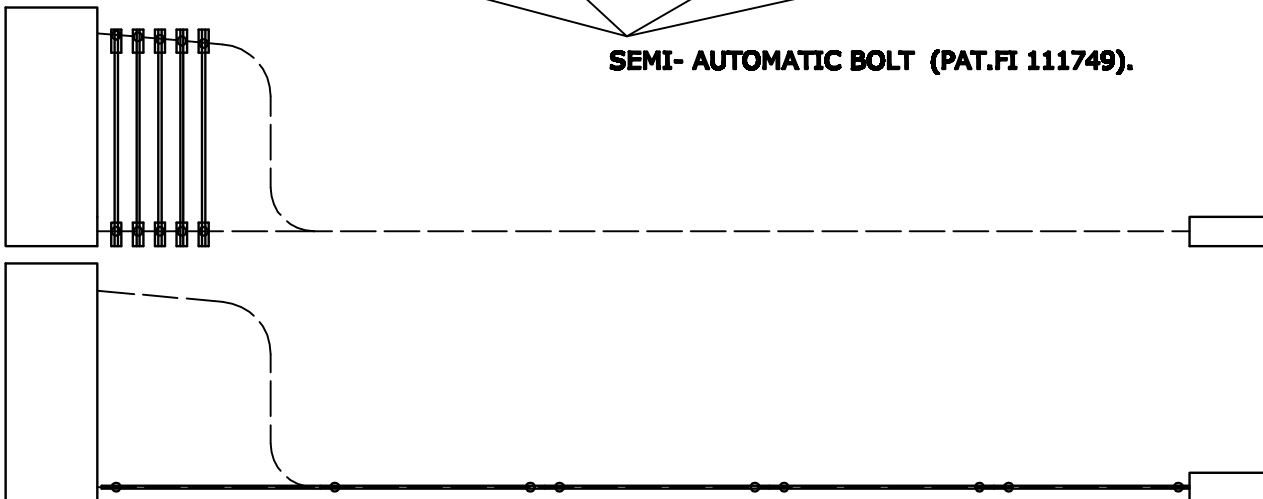


BECKER MONOGLASS L-35-PH-2



SEMI- AUTOMATIC BOLT (PAT.FI 111749).



- Multidirectional stainless steel point hanging
- Track T-10-D (top rail)
- Carrier type C-10-S
- Floor track is not required
- Semiautomatic floorbolts in panels (PAT.PEND)
- Floor sockets with sprung dust caps
- Abloy/Assa cylinders available.
- Pass door in the end (type D-2)
- Stainless steel point clamps at top of panels
- Stainless steel profile (100x35mm) construction at bottom of panel
- Brush seals in bottom profile available

- MAX HEIGHT: 3000mm
- MAX WIDTH: xxxx mm
- MAX PANEL W:1200mm
- WEIGHT: 25..35 kg/m2
- GLASS: safety 10..12mm